

State of Wyoming Corner Record

(In compliance with the CORNER PERPETUATION AND FILING ACT, Wyoming Statutes, 1977, Section 36~11~101, et, seq., and the Rules and Regulations of the Board of Registration for Professional Engineers and Professional Land Surveyors)

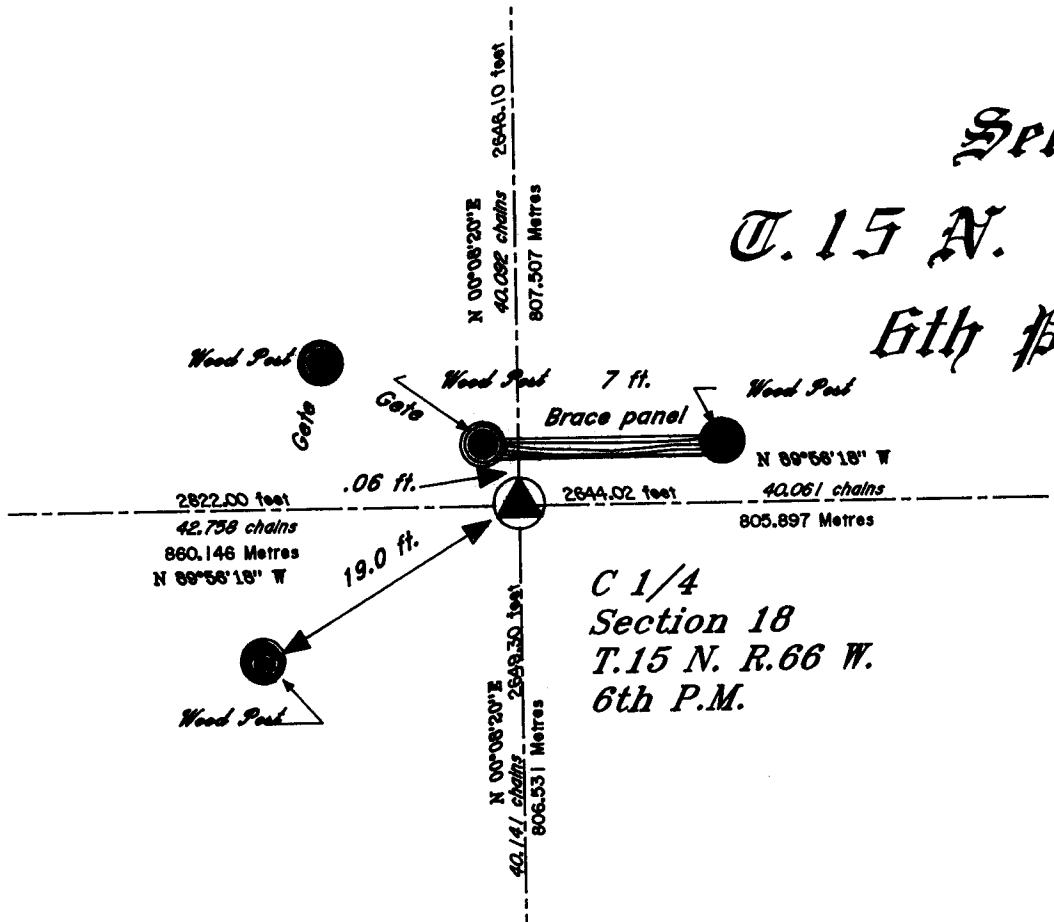
The Reverse side of this form may be used if more space is needed.

The record of the original survey and the citation of the source of historical information (if the corner is lost or obliterated) The description of the corner monumentation evidence as found and/or monument and accessories established to perpetuate the location of this corner. A sketch of the relative location of the monument, accessories, and reference points with course and distance to the adjacent corner(s) (if determined in this survey). The method and rationale for reestablishment of the lost or obliterated corner.

*GLO Notes: No Center 1/4 set during original survey.
Found 5/8" rebar with an Aluminum Cap marked PE&LS 662
and a "T" bar with a cap marked PE&LS 638*

The 5/8" rebar with the Aluminum Cap was set at approximately ground level and the "T" bar with the cap was set at approximately 1 foot below grade. The two monuments varied in horizontal location by less than 0.50 inch.

Set a 36 inch by 2 inch iron pipe with a 2 and one half inch diameter Aluminum Cap OVER the "T" bar and used the 5/8" rebar as a memorial.



*Sec. 18
T. 15 N. R. 66 W.
6th P.M.*



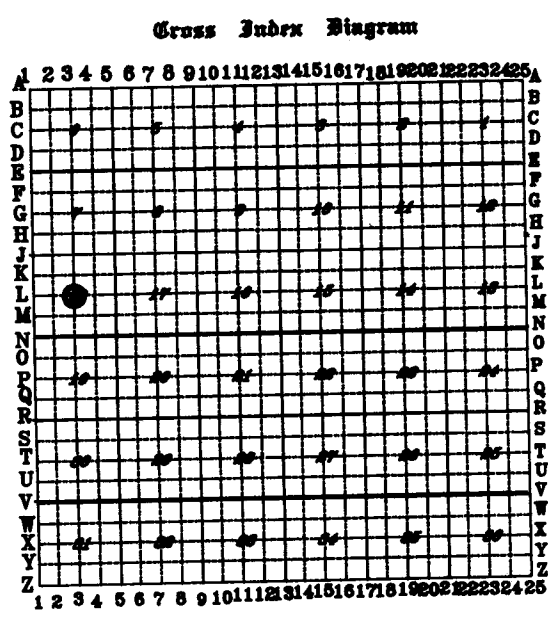
*C 1/4
Section 18
T. 15 N. R. 66 W.
6th P.M.*

LARAMIE COUNTY CLERK
APR 21 1997 CHEYENNE, WY.

201397

Date of Field Work: 14 April 1997

Office Reference: _____



Terrestrial Surveying & Mapping Co.
1127 Terry Ranch Road Cheyenne, Wyoming 82007
Phone: (307) 634-9380

This corner record was prepared by me or under my direct supervision.

Seal and Signature



Corner Name: C 1/4 Section: 18 T. 15 N. R. 66 W. 6th P.M. Cross Index No.: 1395